

Free treats you  
just **HAVE** to get!



1

**Redeem a free McCafé™ Premium Roast Coffee right away!**

Simply present the HAVE Privilege Card at HarbourFront Centre McDonald's™ (#01-86/89) to enjoy your free coffee – no purchase required!

Limited to the 1st 300 redemptions per month.

2

**Redeem an exclusive premium when you shop at HarbourFront Centre now!**

Enjoy retail discounts with your HAVE Privilege Card and spend a minimum of \$100\* at HarbourFront Centre to be eligible for redemption.

- Present your receipts (maximum of 2 combined same-day receipts) and passport/travel documents at our Customer Service Counter located on Level 1 to redeem the gift.
- Images are for illustration purposes only.
- Redemption is based on a first-come, first-served and while-stocks-last basis.
- Other Terms and Conditions apply.

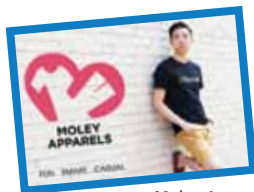
\* For stores not listed in this brochure, a minimum purchase of \$120 is required to redeem the premium.

**Trendy Bubble Bag is available for redemption.**



# HAVE

an enjoyable shopping experience filled with privileges.



Moley Apparels

## FASHION

### Hang Ten #01-91/92

10% off with a min. purchase of \$80

### Moley Apparels #01-94

10% off regular-priced items & additional 5% discount during sale periods

### Moonriver #01-93

10% off regular-priced items

### POA #02-101/102

10% off regular-priced items in a single receipt



The Blues

### The Blues #01-01/03

10% off with a min. purchase of \$80



Dunkin' Donuts

## CAFÉS & RESTAURANTS

### Harry's Bar + Dining #01-64

10% off total bill

### Simply Wrapps #01-51/52

Free waffles dessert with a min. purchase of \$20

To be redeemed in a single receipt on the same day.



Simply Wrapps

## CONFECTIONERY/ SNACKS

### Dunkin' Donuts #01-102

Free regular donut with a min. purchase of \$10

The promotion is not valid for premium donuts.

### AsterSpring Origin of Beauty



## HEALTH & BEAUTY

### AsterSpring Origin of Beauty #02-108/109

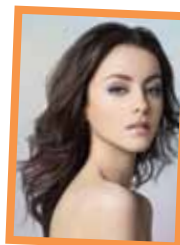
- 30% off any individual facial treatment
- Free Dermalogica travel-sized product with purchase of any 2 Dermalogica skin care products

Applicable to individual facial treatments (min. \$150) except gold, E2 and new treatment. Valid on weekdays (except PH) from 10.30am to 5pm.

### Beaute Brow #02-71

- Classic Eyebrow Embroidery at \$298 (U.P. \$388)
- 20% off Eyebrow Tinting (U.P. \$38)
- 20% off Eyelash Tinting (U.P. \$38)
- Permanent Hair Removal (armpit) 1st trial at \$28 (U.P. \$80)

Applicable for first-time customers only.



Beaute Brow

### Beautti Slim #03-15

Complimentary Duo Facial Enhancement Tool Kit with a min. spending of \$150 on service treatments

Valid for first-time customer above 21 years old. Prior appointment required.



bods.bodynits

### bods.bodynits #01-41/42

Additional 10% off final bill for nett spending of \$100 in a single receipt



Eu Yan Sang TCM

### Eu Yan Sang TCM #03-16

First-time privilege for tourists. Passport must be presented at point of registration in the clinic

Terms and Conditions apply. Check-in clinic for more details.

### Nailz Gallery #03-18

Free organic spa for every classic Manicure and Pedicure

Valid for Normal Colour and Gelish.



Nailz Gallery

## JEWELLERY & WATCHES

### Watch It!

#01-06

15% off regular-priced items



Action Toyz

## KIDS/TOYS/ MATERNITY/ ENRICHMENT CENTRE

### Action Toyz

#01-09/10

10% off with a min.  
purchase of \$20

### Build-A-Bear Workshop

#02-17/18

10% off regular-priced items



Build-A-Bear Workshop



The Polliwogs

### The Polliwogs

#03-60/62

25% off entry price for the  
second child

Discount is off the same or lower  
value entrance fee. Drop-off  
service available.

### ToyTag

#03-58

- 10% off regular-priced items
- Free Wallet Ninja with a  
min. purchase of \$100



ToyTag

## LINGERIE & SWIMWEAR

### Triumph

#02-19

Free \$20 voucher with a  
min. purchase of \$200



DMK

## SHOES & BAGS

### DMK

#02-76

10% off regular-priced items

### EverBest

#02-15/16

10% off regular-priced items

### Hush Puppies

#01-77

20% off regular-priced  
footwear and handbags  
only

### The Luggage People

#01-39/40

- 10% off every \$100  
purchase, up to a max.  
of \$300
- Free Luggage ID Tag with  
a min. purchase of \$100  
in a single receipt



Hush Puppies

Choco Express



## SUPERMARKET & SPECIALTY

### Choco Express

#01-08

10% off regular-priced items

### Taste Original (Organic Food)

#03-57

10% off regular-priced items



Taste Original (Organic Food)

### Terms & Conditions:

All offers are valid from 1 Jan - 31 Dec 2015 and on a while-stocks-last basis. Tourists must present their HAVE Privilege Card and passport/travel documents before placing orders/making payments. Offers are only valid at HarbourFront Centre outlets. All offers are not valid in conjunction with other promotions, discount/membership cards, loyalty programmes, discount/gift vouchers/coupons or sale items unless otherwise stated. Free items are on a while-stocks-last basis and the participating shops reserve the right to substitute them with another item of similar value. Offers are in Singapore currency. Other Terms & Conditions apply.

**HAVE** a great time exploring Singapore and our neighbours.



### Aeroline #02-52

Comfort meets convenience with Aeroline's direct city-to-city travel for seamless connection to 3 locations in Kuala Lumpur. Experience onboard comforts, including a business lounge and onboard Cabin Crew service, as a trained Coach Captain connects you to your destination safely and without hassle!

Visit [www.aeroline.com.sg](http://www.aeroline.com.sg) or call +65 6258 8800.

### Batam Fast #02-50/51

With 35 scheduled departures between 6 ferry terminals and on 5 routes, shuttling between Singapore and Pulau Batam has never been easier. Stops include Batam Centre, Sekupang, Telok Senimba and Nongsapura.

Visit [www.batamfast.com](http://www.batamfast.com) or call +65 6270 2228.

### Indo Falcon #03-42

Your one-stop travel planner for both Leisure & Corporate Travel to Batam, Bintan and Tanjung Pinang, Asia & International Cruises with Royal Caribbean and SuperStar Virgo. Go luxe with customised private functions on board the luxurious MV Falcon Princess.

Visit [www.indofalcon.com.sg](http://www.indofalcon.com.sg) or call +65 6270 6778.

### Horizon Fast Ferry #03-47

Travel with us on a 45-minute hassle-free journey from Singapore to Batam Harbour Bay Ferry Terminal. The terminal is a one-stop entertainment district, best known for its seafood, massages, hotels and shopping mall. Famous shopping cities Nagoya and Jodoh are merely five minutes away. Look forward to our new ferries, 'Horizon'.

Visit [www.horizonfastferry.com](http://www.horizonfastferry.com) or call +65 6276 6711.

Enjoy discounts when you present your HAVE Privilege Card at the ticketing counters.

**10% OFF**  
Sky Pass  
Standard  
(Round Trip)



**Singapore Cable Car / Faber Peak Singapore**  
TWO EXPERIENCES, ONE JOY OF A RIDE.

Experience a 360-degree visual treat of the entire Sentosa-HarbourFront skyline from the top, when you go on the Singapore Cable car *joyride*.

Come 2015, the Singapore Cable Car will not just connect you from Mount Faber to Sentosa Island, you will also be able to ride into and around Sentosa, The State of Fun.

Double your joy in the sky on two cable car lines – the Mount Faber Line, and the new Sentosa Line which will fly you to over 20 attractions including Resorts World™ Sentosa, Madame Tussauds, Sentosa Merlion and Siloso Beach across three new stations.

Don't miss Singapore's only hilltop destination, Faber Peak Singapore, with its relaxing greenery, dining-with-a-view and vibrant entertainment.

So, get set to get high on more happy moments with your family and friends!

**Daily: 8.45am – 10pm (last boarding: 9.30pm)**

Visit: [www.faberpeaksingapore.com](http://www.faberpeaksingapore.com) or call +65 6377 9688 for details about getting to Singapore Cable Car Stations.

**Ticketing Counters: Mount Faber (Faber Peak Singapore), HarbourFront Tower 2, Singapore Cruise Centre (Passenger Services), Sentosa Station.**

#### Terms & Conditions:

Promotion is valid upon presentation of HAVE card before payment at Singapore Cable Car ticketing counters only, for purchases from 1 Jan to 31 Dec 2015. Extension of validity is not permitted. Applicable to purchases of up to 6 Adult and/or Child Tickets per transaction, for same-day usage only. Not valid on the eve of Public Holidays and Public Holidays, or with other promotions, discounts and privileges. Mount Faber Leisure Group reserves the right to change the terms and conditions at any time without prior notice.



## Port of Lost Wonder

Port of Lost Wonder is Singapore's first kids' club by the Beach. Designed to provide a unique experience of family bonding, the attraction houses a signature Pirate Ship water play area, themed islets for picnics and leisure activities for the very young and young at heart.

**10%  
DISCOUNT**

on Port of Lost Wonder admission tickets.

Valid till 31 Dec 2015  
Discount only applicable on weekdays.

### Walk in Tickets:

**Weekdays \$10**

**Weekends and Holidays \$15**

Admission fee only applicable for children aged 12 and under, free admission for accompanying adults. Holidays include Public and Singapore School Holidays.

### Opening Hours:

**10am to 6.30pm daily**  
**(Pirate Ship closes at 6pm)**

### Location:

**Palawan Beach**

[polw.com.sg](http://polw.com.sg)

[www.facebook.com/polwsentosa](http://www.facebook.com/polwsentosa)



**10%  
DISCOUNT**

on Trick Eye Museum admission tickets.

Valid till 31 Dec 2015

### Admission:

**Adult \$25**

**Child/Senior \$20**

## Trick Eye Museum Singapore

Originally from Korea, Trick Eye Museum Singapore is the first overseas branch out of the home country. Artworks at the museum are specially designed for fun and interactive photo-taking experience with the technique of 3D optical illusion. Awarded by TripAdvisor as year 2014 winner in museum and service excellence category in Seoul, majority of the artworks in the local museum are specially created with elements of Singapore.

Trick Eye Museum is an attraction for people of all ages coming together with friends, families and loved ones. Embark on a 3D adventure today - A fun and engaging photo experience awaits you!



**Operating Hours: 10am to 9pm daily (Last Entry: 8pm)**

**Location:**  
**Waterfront @ Resorts World Sentosa**  
**26 Sentosa Gateway**  
**#01-43/44 Singapore 098138**

Visit [www.trickeye.com/singapore](http://www.trickeye.com/singapore) and [www.facebook.com/TrickEyeSingapore](http://www.facebook.com/TrickEyeSingapore) for more information.